



# STRATEGIC ANALYZER

A DESKTOP COMPANION

FOR VOLLEYBALL ACE



© COPYRIGHT 2000-2022  
DIMENSIONAL SOFTWARE  
ALL RIGHTS RESERVED

## Notice

While every attempt has been made to ensure the accuracy and completeness of the information in this manual, some typographical or technical errors may exist. Dimensional Software cannot accept responsibility for customer's losses resulting from the use of this manual.

The information contained in this manual is subject to change without notice. Any improvements or changes to either the product or the manual will be documented in subsequent editions. This manual contains proprietary information which is protected by copyright. All rights are reserved. No part of this manual may be photocopied, reproduced, or translated to another language without prior written consent of Dimensional Software.

Volleyball Ace, Volleyball Ace Analyzer, the Volleyball Ace symbol and logos, SnapCharts and Dimensional Software are trademarks of Dimensional Software. Macintosh, iPad, iPhone, iPod, Macintosh and iTunes are trademarks of Apple Computer. Android and Google are trademarks of Google. DakStats 3000 is a trademark of Daktronics. MaxPreps is a trademark of CBS.

Version 10.00

Publication Date: September, 2022

© Copyright 2000-2022 Dimensional Software

If you have any questions about this manual or Volleyball Ace, contact:

### **Dimensional Software**

Los Altos, California 94024  
U.S.A.

web: [www.taprecorder.com](http://www.taprecorder.com)  
email: [Coach@taprecorder.com](mailto:Coach@taprecorder.com)

# Table of Contents

<b>Chapter</b>		<b>Page</b>
	<b>Table of Contents</b>	<b>3</b>
	<b>About this Guide</b>	<b>5</b>
<b>1</b>	<b>Strategic Analyzer Introduction</b>	<b>6</b>
<b>2</b>	<b>Getting Started</b>	<b>8</b>
	Running Strategic Analyzer - WinPC	8
	Running the Strategic Analyzer - Mac	9
	Browsing to Match Data	10
	Selecting Sets to Include in Stats	11
<b>3</b>	<b>Strategic Analyzer Reports</b>	<b>13</b>
	Box Score	13
	Player Summary	14
	Points per Rotation	15
	Points per Rotation Adjustments	15
	Serve and Pass Ratings	17
	Forced versus Unforced Errors	18
	Creates and Converts - Digs and Freeballs	18
	Match Scores	19
	Per Set Averages	19
	Total Attempts	20
<b>4</b>	<b>Custom Reports</b>	<b>21</b>
<b>5</b>	<b>Other Report Features</b>	<b>24</b>
	Opponent Statistics	24
	Stats by Player for Both Teams - Windows only	25
	Row and Page Options	25
	Sort Order	26
	Preference Options	26

## Table of Contents (continued)

Chapter		Page
<b>6</b>	<b>Printing Options</b>	<b>27</b>
	Print Preference Options	28
<b>7</b>	<b>Stat Export Features</b>	<b>29</b>
	Exporting stats to MaxPreps	30
	Exporting stats to DakStats 3000	31
<b>8</b>	<b>Preferences</b>	<b>36</b>
<b>9</b>	<b>Play-by-Play Log</b>	<b>38</b>
<b>10</b>	<b>Player Renumbering</b>	<b>41</b>
<b>11</b>	<b>Desktop Data Transfer</b>	<b>44</b>
	Transferring Apple Data with iTunes	44
	Transferring Apple Data without iTunes (Mac)	48
	Transferring Android Data to WinPc	49
	Transferring Android Data to Macintosh	50

## About this Guide

This guide describes the Strategic Analyzer, a companion to Volleyball Ace which runs on desktop and laptop PCs and Macintosh computers.

Chapter 1 is an introduction.

Chapter 2 describes how to set up and run the Strategic Analyzer.

Chapter 3 shows the many built-in stat reports.

Chapter 4 illustrates how to set up and save custom reports.

Chapter 5 discusses more stat reporting features.

Chapter 6 illustrates printing functions.

Chapter 7 details the variety of stat export features.

Chapter 8 describes preferences for screen, printer and stat calcs.

Chapter 9 covers the Play-by-Play feature for rally details.

Chapter 10 shows how player numbers can be changed.

Chapter 11 gives details of transferring stats to the desktop.

# **Chapter 1**

## **Introduction**

Volleyball stats which been recorded using Volleyball Ace on Apple and Android phones and tablets can be uploaded to Windows PCs and Macintosh computers for consolidation, analysis, printed reports, export to other tools and output to data files (including web-ready files). The Strategic Analyzer is built into Volleyball Ace for Windows so stats do not have to be uploaded to use it on that platform.

In addition to extended reporting capabilities, the Strategic Analyzer includes utilities for displaying play-by-play detail and renumbering players to handle jersey number changes.

This guide assumes that if the stats were recorded using a phone or a tablet that data has been uploaded to a Windows PC or a Macintosh. Note that Chapter 11 has details on how to transfer Volleyball Ace data files from phones and tablets to desktop and laptop PCs and Macintosh computers.

# Strategic Analyzer

Report Type:

Box Score

Rows:

Players

Pages:

<none>

☒ Suppress Zeroes
 ☒ Hide If No Stats
 ☒ Print Landscape

Label Width:

25

First Last name

☐ Gridlines

Sort Order

Jersey Number

☒ Up
 ☐ Down

More Format, Print, Stat Options

	Sets	Attk Kills	Attk Err	Attk TA	Attack Pct.	Set Asst	Srve Ace	Srve Err	Serve Att	Rec Err	Rec Att	Def Dig	Blk Solo	Blk Assts	Blk Err	Gen BHE	Pts
1 Abby	5	6	2	18	.222	38	1	2	23			8	2	3		4	10.5
2 Summer	5	7	1	19	.316	2	1	4	14		1	4	1	4			11.0
3 Chelsea	5	20	6	56	.250		1	3	17	3	11	17		1			21.5
4 Jessica	2							2	7		1	1					
6 Christie	3	1	2	8	-.124				4		3	1		1		1	1.5
7 Monica	4		1	1			1	1	9		5	8					1.0
9 Biz	5	3	4	20	-.049	3	6	4	19	3	31	14					9.0
11 Ali	5			6		2				1	25	18					
12 Kelsey	5	5	3	12	.167						2	3		2			6.0
14 Hillary	5	8	4	24	.167	1	2	4	16		3	4		3			11.5
MVHS21	5	50	23	164	.165	46	12	20	109	7	82	78	3	7		5	68.5

Attacks by Set	K	E	TA	Pct.
Set 1	6	4	33	.060
2	13	7	38	.157
3	14	2	29	.413
4	8	8	39	.000
5	9	2	25	.280

Set Scores:	1	2	3	4	5
MVHS21	23	25	25	19	17
Paly	25	23	18	25	15

Total Team Blocks: 10

Exit

Charts

Reselect Data

Print Setup

Print

Export

Other Team->

Customize

# Chapter 2

## Getting Started

The most important of the desktop tools is the Volleyball Ace Strategic Analyzer. This desktop application provides many more types of reports than are available on the iPad/iPhone and Android platforms. It even provides for customization of reports.

In addition to reporting, the Strategic Analyzer also provides options for exporting stat data to other systems such as MaxPreps and DakStats 3000.

This chapter will cover basic data selection and reporting within the Analyzer. The following chapters will cover customizing reports, data output, data export, player renumbering and rally log display.

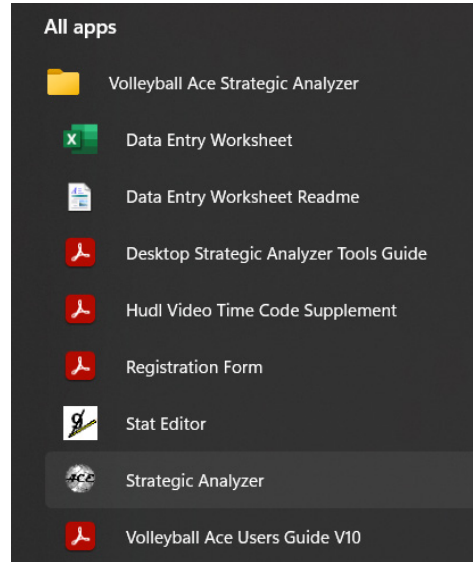
Before using the Strategic Analyzer you must copy the Volleyball Ace set stat files to the desktop computer. Chapter 11, “Desktop Data Transfer”, has details on this process.

Once the stat files are on the desktop, run the Strategic Analyzer.

### Running the Strategic Analyzer - Windows PC Desktop

Double-click on the **Strategic Analyzer icon** on the desktop. If the icon is not visible on the desktop, click on the **Start button**, select all apps, then scroll down to the Volleyball Ace Strategic Analyzer folder. Run the Analyzer by clicking on the Strategic Analyzer entry.

# Strategic Analyzer



## Running the Strategic Analyzer - Macintosh Desktop

Once the data has been copied to your Mac using iTunes, run the Strategic Analyzer by clicking on the **Strategic Analyzer icon**. If the Analyzer icon is not visible, then use the Finder and go to the Applications folder and double-click on the **Strategic Analyzer** entry there:

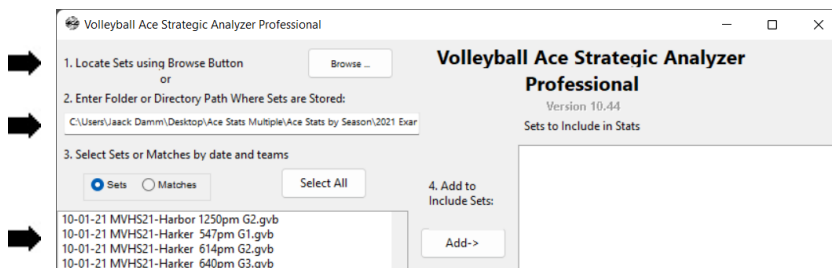


Select one or more sets using the first screen in the Analyzer.

# Strategic Analyzer

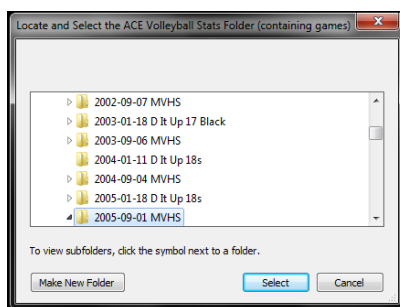
## Browsing to Match Data

If no sets appear in the **Select Sets** listbox you may need to select a different drive or directory in the Analyzer.



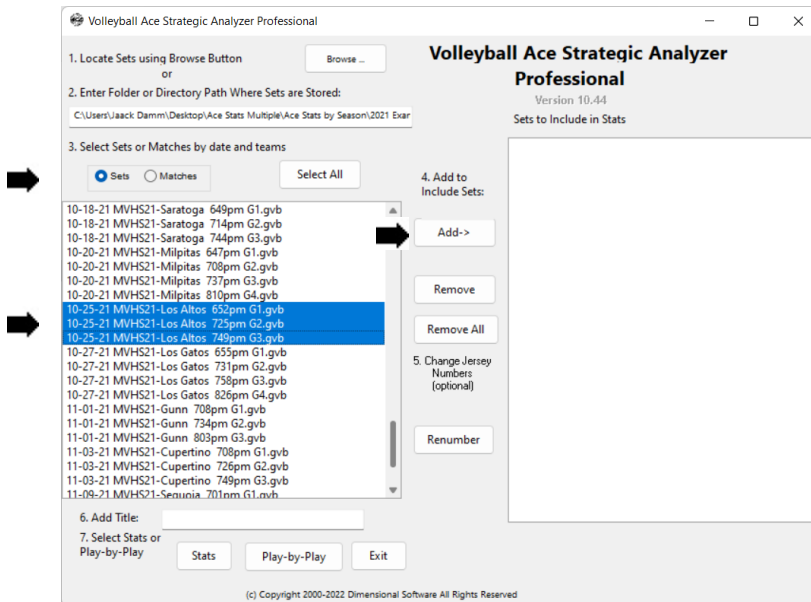
The data transferred to the desktop will be located in the folder where you saved it on the desktop with iTunes or the Finder (Apple) or via the Windows Explorer (WinPC-Android) or the Android File Transfer utility (Macintosh-Android).

To access the saved set data, click on the **Browse button** (see above) and navigate to the appropriate folder:



## Selecting Sets to Include in Stats

Select sets to be included in stats using the first screen of the Strategic Analyzer. Select sets then click on the **Add** button to add them to the box on the right-hand side. Note that you can select data by set or by match by choosing either the **Set** or the **Match** options.

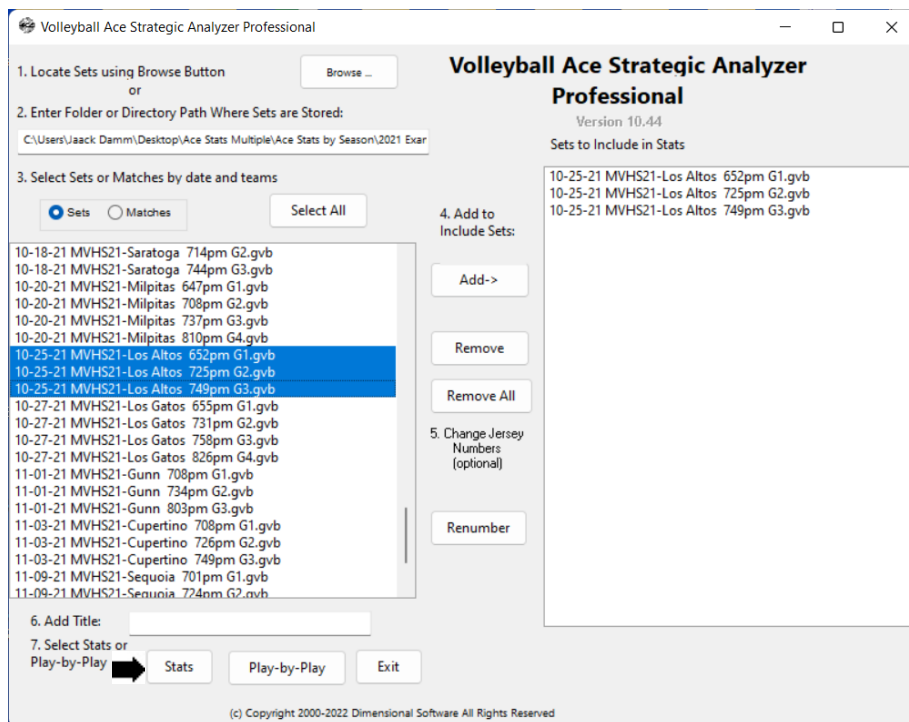


Note that multiple sets can be selected using shift-click to select a range of sets or control-click to select several sets at once.

Click on the **Add** button to copy the selected sets into the list on the right-hand side of the screen.

# Strategic Analyzer

Click on the **Stats button** to report data from these sets:



The Strategic Analyzer creates more reports than are available from Volleyball Ace on phones and tablets. These include fully formatted box scores, individual player stats, per set average stats, total attempts, earned versus unearned points, first ball stats and a summary of set and match scores.

The next chapter shows these built-in reports.

## Chapter 3 Strategic Analyzer Reports

This chapter illustrates the built-in reports created by the Strategic Analyzer. The next chapter has details on how to create additional reports using the custom reporting feature.

### Box Score

Volleyball Ace box scores generated by the Strategic Analyzer show all the information required on collegiate box scores, including hitting stats per set and set scores.

#9 MVHS05 vs Sequia (3 games)

Report Type:
Box Score
Rows:
Players
Pages:
<none>

☒ Service Passes Only
☐ Suppress Zeros
Sort Order:
<none>

☐ Print Set List
☐ Gridlines
☒ All Pages
☐ Hide If No Stats

☒ Add rotation for 1st serve

Row Width:
25

	Games	Attk Kills	Attk Err	Attk TA	Attack Pct.	Set Asst	Srv Ace	Srv Err	Srv Rec	Rec Att	Def Dig	Blk Solo	Blk Assts	Blk Err	Gen BHE	Pts
1 Abby	3	2	1	6	.167	31	2	2	12		5					4.0
2 Summer	3	6		12	.500						3	1				7.0
3 Chelsea	3	12	2	21	.476		2	1	11	12	9	1			1	15.0
4 Jessica	1	1		2	.499				2		1	2				
5 Laura	1	1		3	.333		2		1						4	1.0
6 Christie	1					1			1		1					
7 Monica	3					2			8		6					
8 Lauren	1	3		4	.750		1				2				1	3.0
9 Biz	3	5	4	23	.043		10		23	10	5			1		15.0
10 Elizabeth	3	1		1	1.000		1	1	8		1					2.0
11 Ali	3	1	1	8		1				18	22					1.0
12 Kelsey	3	4	1	9	.333		1			1	1	1	1		1	5.5
13 Marilee	1										2					
MVHS05	3	40	13	102	.265	39	17	5	73	1	46	58	4	2	1	7
Sequoia	3	40	13	102	.265	39	17	5	73	1	46	58	4	2	1	7

Attacks by Set

Set	1	11	6	38	.131
2	14	3	25	440	
3	15	4	39	282	

Total Team Blocks: 5

Set Scores:	1	2	3	4	5
MVHS05	25	25	25		
Sequoia	15	13	20		

Exit

Charts

Reset Data

Print Setup

Print

Output

Other Team->

Customize

Note: If sets from more than one match are selected, then the hitting per set and set scores are not listed in the on-screen report. Also note that checking the **Print Set List checkbox** causes a list of all sets, set scores and match totals to be printed. (A set list report can also be created on-screen using the Match Scores report).

# Strategic Analyzer

## Player Summary

Player summary reports show stats for individual players all on the same page. Note the **PageDown** and **PageUp** buttons, which scroll through all players in the roster. Also note the **All Pages checkbox**, which affects whether all pages or only the current page is printed when the print option is selected.

3 Chelsea

MVHS05

Sets played: 108 of 109

Page 4

Report Type:  
Player Summary

Rows:  
Stat Type

Pages:  
Players

☒ Service Passes Only  
☐ Print Set List

☐ Suppress Zeroes  
☐ Gridlines

☒ All Pages  
☒ Hide If No Stats

Row Width: 25

PageDown

PageUp

Adj rotation for 1st serve

Attacks.....	Kills 460	Errors 124	Att. 1109	KillEff .303	Kills/Gm 4.26					
Serves.....	Aces 55	Errors 46	Att. 448	Ace % 12%	Aces/Gm .51	Svc Pts 221				
Assists.....	Assists 40	BHE 13	Sets 170	AsstEff .159	Asst/Gm .37					
Passes.....	Passes 433	Errors 29	Att. 462	Pass % 94%	Pass/Gm 4.01	Rated 0 35	1 35	2 47	3 106	Avg 2.00
Digs.....	Digs 443	Errors 43	Att. 486	Dig % 91%	Digs/Gm 4.10					
Blocks.....	Solo 11	Assist 15	Total 26	Errors 2	Block/Gm .24					

Exit

Charts

Reselect Data

Print Setup

Print

Output

Other Team->

## Points per Rotation

The Points per Rotation report shows performance for both the coach team and the opponent. It also includes a sideout % stat for each team.

MVHS05 vs Los Altos ( 4 sets)

Report Type: PointsPerRotation Rows: Rotations Pages: <none> ☒ Suppress Zeroes ☒ Hide If No Stats ☒ Print Landscape Label Width: 25 First Last name ☐ Gridlines [More Format, Print, Stat Options](#)

	Team Serves	Team Points	Team Rotns	PntsPer Rotn	Side Out %	Opp Serves	Opp Pnts	Opp Rotns	Opp PPR	Net PPR	Opp S/O %
R1: 1	18	7	11	.63	52%	21	10	11	.90	-.27	61%
R2: 3	13	2	11	.18	71%	14	4	11	.36	-.18	84%
R3: 2 10	18	8	10	.80	58%	17	7	10	.70	.10	55%
R4: 4 7	24	14	10	1.40	52%	17	8	10	.80	.60	41%
R5: 9 8	17	8	9	.88	69%	13	4	9	.44	.44	52%
R6: 14	9	2	7	.28	56%	16	7	9	.77	-.49	77%
Total	99	41	58	.70	59%	98	40	60	.66	.04	58%

## Points per Rotation Adjustments

When Points per Rotation are reported for more than one set, the rotations may need to be adjusted when the team serves versus when the team is in serve receive. For teams which back-rotate their lineup when they are in serve receive, the rotation can be adjusted automatically. Alternately, the rotation can be centered on a specific player, typically the setter.

To specify how the rotations are to be adjusted, click on the **More Format, Print, Stat Options** button at the top of the stat page (see above). Then click on the **Rotation Adjust** button toward the bottom of the **Preferences** screen:

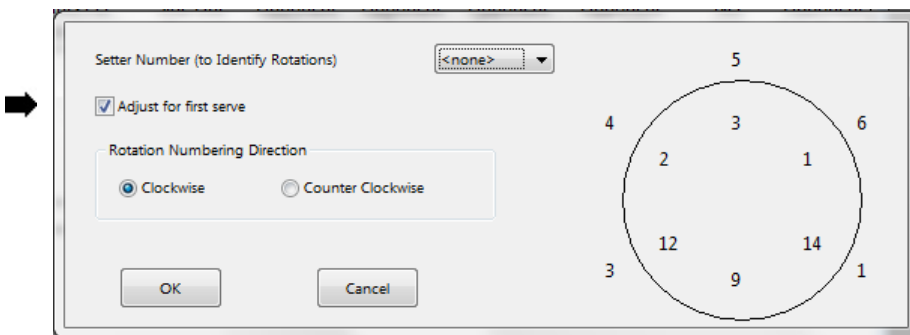
Preference Settings for Screen, Printer and Stat Calculations

Points per Rotation Adjustment to Rotations

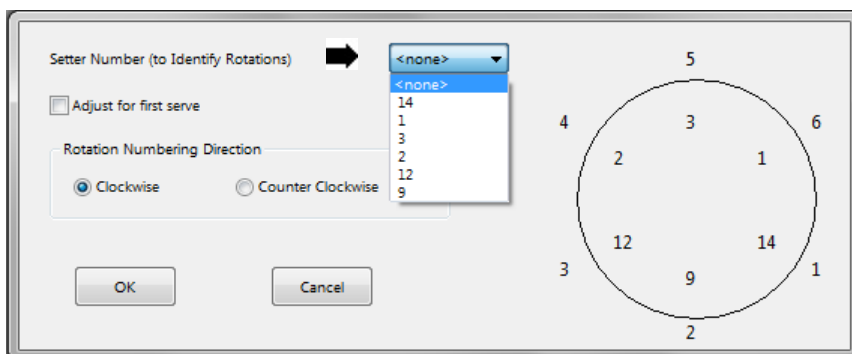
[Rotation adjusted for 1st serve](#) [Help](#)

# Strategic Analyzer

Then select the rotation centering by checking the **Adj for first serve** checkbox:



Alternatively, adjust the rotation centering by selecting a player from the **Setter number drop-down list**:



The result when we center around the setter is:

MVHS05 vs Opponents (7 games)

Report Type: PointsPerRotation Rows: Rotations Pages: <none>

Row Width: 25

Service Passes Only [x] Suppress Zeroes [x]  
 Print Set List [ ] Gridlines [x] All Pages [x]  
 PPR incl Side Out Pts [x] Hide If No Stats [x]  
 Rotation relative to # 1

	Team Serves	Team Points	Team Rotations	Points Per Rotation	Side Out Percent	Opponent Serves	Opponent Points	Opponent Rotations	Opponent PPR	Net PPR	Opponent Side Out %
R1: 1	27	27	18	1.50	58%	31	31	18	1.72	-.22	58%
R2: 14	19	22	12	1.83	57%	26	23	15	1.53	.30	57%
R3: 9 8	31	30	16	1.87	66%	21	22	15	1.46	.41	66%
R4: 4 7	34	34	16	2.12	47%	34	34	17	2.00	.12	47%
R5: 2 10	29	29	16	1.81	69%	23	23	16	1.43	.38	69%
R6: 3	23	21	18	1.16	57%	28	30	17	1.76	-.60	57%
Total	163	163	96	1.69	58%	163	163	98	1.66	.03	58%

## Serve and Pass Ratings

If sets are statted using the optional serve and pass ratings, these can be seen on the built-in rating reports.

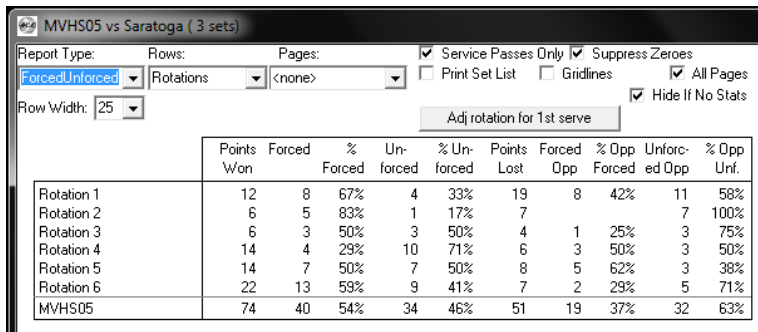
	Rated 0	Rated 1	Rated 2	Rated 3	Rated 4	Total Rated	Serve Avg
1 Annika			5		3	8	2.75
2 Susan							
3 Cathy	2		31		6	39	2.21
4 Candy	11		16	1	10	38	1.97
5 Rebecca			5		1	6	2.33
6 Sally	3		26	2	3	34	2.06
7 Samantha							
8 Petunia	5		11			16	1.38
11 Kaitlin							
12 Abby	3		26	1	4	34	2.09
13 Lucky	6		37		11	54	2.19
MMHS 03	30		157	4	38	229	2.09

	Rated 0	Rated 1	Rated 2	Rated 3	Total Rated	Pass Avg
1 Annika	14	5	10	6	35	1.23
2 Susan			1		1	2.00
3 Cathy	12	1	25	3	41	1.46
4 Candy	1				1	
5 Rebecca			3	1	4	2.25
6 Sally	5	2	33	13	53	2.02
7 Samantha	3		1	1	5	1.00
8 Petunia	8		20	5	33	1.67
11 Kaitlin	1	1	3		5	1.40
12 Abby	3	1	7	4	15	1.80
13 Lucky	7	4	9		20	1.10
MMHS 03	54	14	112	33	213	1.58

# Strategic Analyzer

## Forced versus Unforced Errors

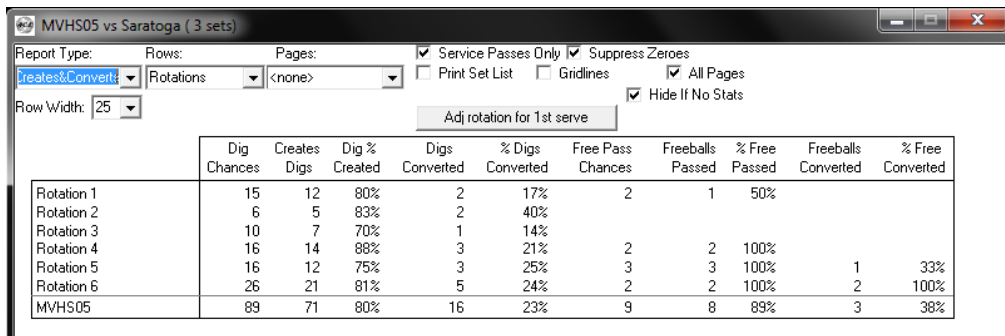
This report shows which points were the result of actions by the coach team or the result of errors by the opponent. It shows when a match may have been won against a weaker opponent due to their errors as opposed to good play by the coach team.



	Points Won	Forced	% Forced	Unforced	% Unforced	Points Lost	Forced Opp	% Opp Forced	Unforced Opp	% Opp Unf.
Rotation 1	12	8	67%	4	33%	19	8	42%	11	58%
Rotation 2	6	5	83%	1	17%	7	7	100%	7	100%
Rotation 3	6	3	50%	3	50%	4	1	25%	3	75%
Rotation 4	14	4	29%	10	71%	6	3	50%	3	50%
Rotation 5	14	7	50%	7	50%	8	5	62%	3	38%
Rotation 6	22	13	59%	9	41%	7	2	29%	5	71%
MVHS05	74	40	54%	34	46%	51	19	37%	32	63%

## Creates and Converts - Digs and Freeballs

The Creates and Converts report shows how the coach team performed in situations where a scoring opportunity was created by a dig or by a freeball.



	Dig Chances	Creates Digs	Dig % Created	Digs Converted	% Digs Converted	Free Pass Chances	Freeballs Passed	% Free Passed	Freeballs Converted	% Free Converted
Rotation 1	15	12	80%	2	17%	2	1	50%		
Rotation 2	6	5	83%	2	40%					
Rotation 3	10	7	70%	1	14%					
Rotation 4	16	14	88%	3	21%	2	2	100%		
Rotation 5	16	12	75%	3	25%	3	3	100%	1	33%
Rotation 6	26	21	81%	5	24%	2	2	100%	2	100%
MVHS05	89	71	80%	16	23%	9	8	89%	3	38%

## Match Scores

Match score reports show scores by set and tally sets won and lost and matches won and lost.

	Games	Game 1	Game 2	Game 3	Game 4	Game 5	Game Won	Game Lost	Match Won	Match Lost
Pinewood	3	25-19	25-12	25-8			3		1	
Branham	5	7-25	20-25	25-21	25-19	17-15	3	2	1	
NotreDam	4	25-6	17-25	26-24	25-16		3	1	1	
Milpitas	4	21-25	22-25	25-16	15-25		1	3		1
MVHS03	16						10	6	3	1

## Per Set Averages

Select the **Per Set report type** to see per set average stats. Per set averages are totals divided by number of sets played (per player) and are ***not*** net of errors. For example, kills per set are calculated as total kills divided by number of sets played without subtracting attack errors.

	---Kills---	---Assists---	---Aces---	---Digs---	---Passes---	---Blocks---
1 Damm	0.70	6.31	0.62	2.29	0.02	0.07
3 Hope	1.47	0.06	0.37	1.58	2.00	0.01
5 Lawrence	2.38	0.11	0.58	2.50	4.17	0.29
6 Smith	1.45	0.10	0.19	1.49	1.48	0.12
7 Underwood	0.31		0.21	0.56	0.36	
8 Murray	0.79	0.06	0.49	2.31	1.86	0.01
10 Connor	0.69	0.38	0.15	0.69	1.02	0.04
11 Moon	1.00	0.08	0.03	0.65	0.86	
14 Lucky	1.39	0.48	0.55	2.52	3.37	
17 Kate	0.17	0.01	0.54	1.74	1.44	
43 Manning	1.22	0.05	0.38	1.14	1.85	0.05
PowerAces	8.56	7.11	3.11	13.41	13.61	0.45

# Strategic Analyzer

## Total Attempts

	Attacks	Sets	Serves	Digs	Passes	Blocks
1 Damm	234	3209	527	376	3	16
3 Hope	629	71	298	245	308	2
5 Lawrence	730	115	390	306	496	64
6 Smith	541	73	117	205	194	46
7 Underwood	38	6	102	31	21	
8 Murray	372	77	373	298	243	2
10 Connor	125	68	89	47	66	2

# Chapter 4

## Custom Reports

In addition to the built-in reports, the Volleyball Ace Strategic Analyzer also has custom reporting. Using this feature you can create reports with the specific stats you want. Stats are selected from a series of drop-down menus and are shown as columns on the custom report.

Custom reports can use built-in reports, then add or delete columns as desired. To create a custom report, click on the **Customize button**:



The initial custom report screen will include all columns which were on the screen when the **Customize button** was clicked. Enter a Title, a Row type and a Page type, then begin editing the columns.

Volleyball Ace Custom Stat Report

### Volleyball Ace Custom Stat Report

1. Initial Template:	2. Title: MVHS05 vs Saratoga	3. Rows: Players	Width: 18	4. Pages: <none>
----------------------	---------------------------------	---------------------	--------------	---------------------

5. Stat Columns

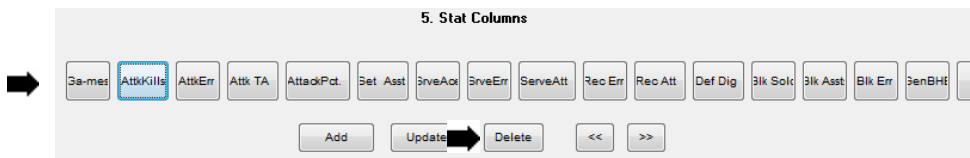
3a-mes AttkKills AttkErr Attk TA AttckPot. Set Asst SrveAcc SrveErr ServeAtt RecErr RecAtt Def Dig 3lk Solc 3lk Asst Blk Err 3enBHT

Stat

☐ Attacks ☐ Serves ☐ Sets ☐ Digs ☐ Passes ☐ Blocks ☐ Freeballs ☐ Sets ☐ PtsPerRotation ☐ Points

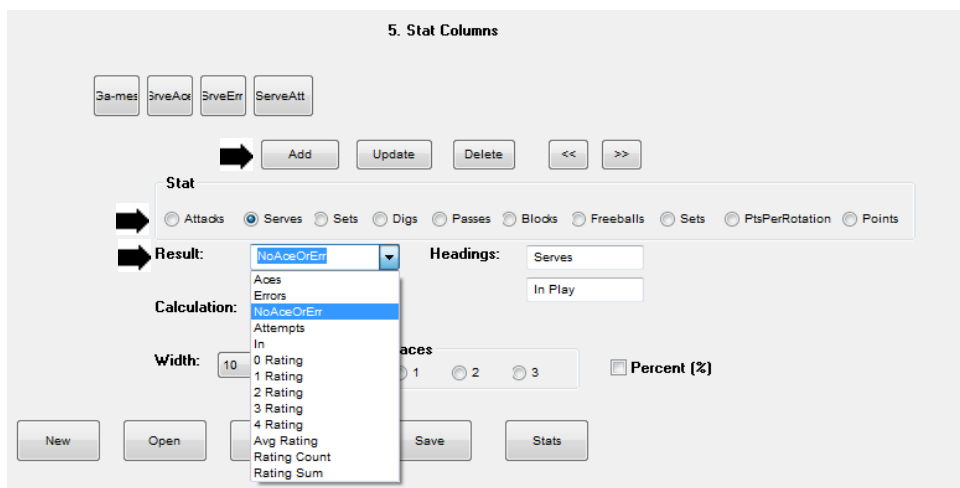
# Strategic Analyzer

For this example, we are going to build a service analysis. Start by deleting the non-serve columns. To delete a column, tap on that column then tap on the **Delete** button.



After deleting the unwanted columns, add additional columns. To add a column, tap on the type of stat (Serves) the result (NoAceNoErr) and the calculation (count).

New columns will have default headings which can be edited. Select the formatting you want using the **Width**, **Decimal Places** and **Percent** options. Then click on the **Add** button.



To move a column (added columns are always added as the right-most column) click on that column then click on the << or >> **button**.

5. Stat Columns

Games SrvAce SrvErr ServeAtt **ServesIn Play**

Delete << >>

Stat

☐ Attacks ☐ Serves ☐ Sets ☐ Digs ☐ Passes ☐ Blocks ☐ Freeballs ☐ Sets ☐ PtsPerRotation ☐ Points

The resulting stat report looks like this:

Report Type: Rows: Pages:

<Custom> Players <none>

Row Width: 18

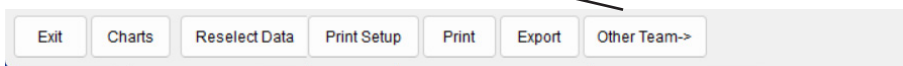
	Srv	Srv	Srv	Serve	
	Sets	Ace	Err	In Play	Att
1 Abby	3	1	1	9	11
2 Summer	3				
3 Chelsea	3	2		21	23
4 Jessica	1			1	1
5 Laura	1	1		3	4
6 Christie	1				
7 Monica	2		2	11	13
8 Lauren	1	1		1	2
9 Biz	3		1	3	4
10 Elizabeth	3			10	10
11 Ali	3				
12 Kelsey	2				
14 Hillary	3		3	1	4
MVHS05	3	5	7	60	72

Click on the **Customize button** to return to the Custom screen to make any more changes to the custom report and to save it. Saved custom reports can be opened and reused.

## Chapter 5 Other Report Features

### Opponent Statistics

Click on the **Other Team** button on the Stats screen to display statistics for the opposing team.



Select the Report Type from the drop-down box at the upper left.

The screenshot shows a window titled 'MVHS21 vs Los Altos (3 sets)'. On the left, a 'Report Type:' dropdown menu is open, showing a list of options: Winners (Opp), Errors (Opp), Attempts (Opp), Efficiency (Opp), Winner % (Opp), Error % (Opp), and Per Set (Opp). The 'Winners (Opp)' option is selected. To the right of the dropdown, there are three checked checkboxes: 'Suppress Zeroes', 'Hide If No Stats', and 'Print Landscape'. Below these are two dropdowns: 'Label Width: 25' and 'First Last name'. A 'More Format, Print, Stat Options' button is also present. The main area displays a table with the following data:

	RtAttack Winners	Mid Attk Winners	Lft Attk Winners	BackAttk Winners	Freeball Winners	Serve Aces	Block Winners
Rotation 1			3			1	1
Rotation 2		1	2			2	
Rotation 3	2	1	1			1	
Rotation 4			3		1	1	
Rotation 5		2	2				
Rotation 6			1			1	
Total	2	4	12		1	6	1

Total Opponent Winners	2	4	12		1	6	1
Total Opponent Errors	4	3	9		1	6	
Total Opponent Attempts	26	15	57	9	14	55	2
Opponent Efficiency	-.076	.067	.053				
% of Opponent Attacks	24%	14%	53%	8%			
Overall Efficiency		.019					

At the bottom of the window is a row of buttons: Exit, Charts, Reselect Data, Print Setup, Print, Export, and Other Team->.

## Stats by Player for Both Teams - Windows only

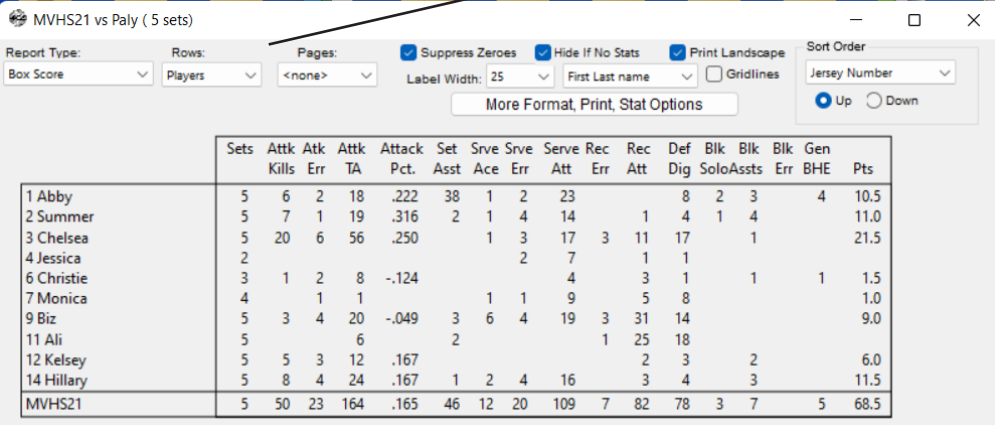
The most common method of recording stats with Volleyball Ace is to record stat detail by player for the “coach team” and only summary data “type of attack/block/error” for the opponent.

However, in Volleyball Ace for Windows, you have the option of doing stats by player for both teams. This works because most Windows devices have keyboards and this version of Volleyball Ace allows keyboard stat entry.

The Strategic Analyzer knows which matches have two-sided stats. For these matches, detailed stat reports are shown for both teams.

## Row and Page Options

The Strategic Analyzer also has row and page options (by player, by rotation, by first ball, by transition offense, by set, by match). Select the rows and pages using the **Row** and **Page** drop-down lists.

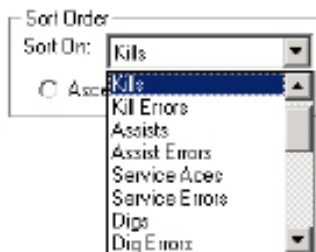


	Sets	Attk	Attk	Attk	Attack	Set	Svc	Svc	Serve	Rec	Rec	Def	Blk	Blk	Blk	Gen	Pts
	Kills	Err	TA	Pct.	Asst	Ace	Err	Att	Err	Att	Err	Dig	Solo	Assts	Err	BHE	
1 Abby	5	6	2	18	.222	38	1	2	23			8	2	3		4	10.5
2 Summer	5	7	1	19	.316	2	1	4	14		1	4	1	4			11.0
3 Chelsea	5	20	6	56	.250		1	3	17	3	11	17		1			21.5
4 Jessica	2							2	7		1	1					
6 Christie	3	1	2	8	-.124				4	3	1			1		1	1.5
7 Monica	4		1	1			1	1	9		5	8					1.0
9 Biz	5	3	4	20	-.049	3	6	4	19	3	31	14					9.0
11 Ali	5			6		2				1	25	18					
12 Kelsey	5	5	3	12	.167						2	3		2			6.0
14 Hillary	5	8	4	24	.167	1	2	4	16		3	4		3			11.5
MVHS21	5	50	23	164	.165	46	12	20	109	7	82	78	3	7		5	68.5

# Strategic Analyzer

## Sort Order

The **Sort Order** feature of the Analyzer makes it simple to rank players based on different stats. Select **Ascending** to rank players from lowest to highest and **Descending** to rank from highest to lowest. Note that data can only be sorted using figures shown on the current report. Select the stat to be used from the **Sort Order dropdown list** at the upper right of the stats page.



## Preference Options

There are many options for formatting, printing and exporting stat data in the Strategic Analyzer. Some of the most frequently used options are shown at the top of the stats page. The others are accessed by tapping on the “More Format, Print, Stat Options” button.

A screenshot of the Strategic Analyzer interface. At the top, there are various report options: 'Report Type' (Box Score), 'Rows' (Players), 'Pages' (<none>), 'Label Width' (25), 'First Last name', 'Gridlines', 'Suppress Zeros' (checked), 'Hide If No Stats' (checked), 'Print Landscape' (checked), and 'Sort Order' (Jersey Number). Below these options is a button labeled 'More Format, Print, Stat Options'. The main part of the screenshot shows a table with player statistics. The table has columns for Sets, Attk Kills, Attk Err, Attk TA, Attack Pct, Set Asst, Srve Ace, Srve Err, Serve Rec Att, Rec Err, Def Att, Def Dig, Blk Solo, Blk Assts, Blk Err, Gen BHE, and Pts. The table lists data for seven players: Abby, Summer, Chelsea, Jessica, Christie, and Monica.

	Sets	Attk Kills	Attk Err	Attk TA	Attack Pct	Set Asst	Srve Ace	Srve Err	Serve Rec Att	Rec Err	Def Att	Def Dig	Blk Solo	Blk Assts	Blk Err	Gen BHE	Pts
1 Abby	5	6	2	18	.222	38	1	2	23			8	2	3		4	10.5
2 Summer	5	7	1	19	.316	2	1	4	14		1	4	1	4			11.0
3 Chelsea	5	20	6	56	.250		1	3	17	3	11	17		1			21.5
4 Jessica	2							2	7		1	1					
6 Christie	3	1	2	8	-.124				4		3	1		1		1	1.5
7 Monica	4		1	1			1	1	9		5	8					1.0

See Chapter 8, “Preferences”, for a list of these options and details about how these Preferences are saved by the Strategic Analyzer.

## Chapter 6 Printing Options

The Strategic Analyzer has several print options which are selected from the command buttons at the bottom of the stat screen.

MVHS21 vs Paly ( 5 sets)

Report Type: Box Score Rows: Players Pages: <none> ☒ Suppress Zeroes ☒ Hide If No Stats ☒ Print Landscape Sort Order: Jersey Number Up Down

Label Width: 25 First Last name ☐ Gridlines More Format, Print, Stat Options

	Sets	Attk Kills	Atk Err	Attk TA	Attack Pct.	Set Asst	Srve Ace	Srve Err	Serve Att	Rec Err	Rec Att	Def Dig	Blk Solo	Blk Assts	Blk Err	Gen BHE	Pts
1 Abby	5	6	2	18	.222	38	1	2	23			8	2	3		4	10.5
2 Summer	5	7	1	19	.316	2	1	4	14		1	4	1	4			11.0
3 Chelsea	5	20	6	56	.250		1	3	17	3	11	17		1			21.5
4 Jessica	2							2	7		1	1					
6 Christie	3	1	2	8	-.124				4		3	1		1		1	1.5
7 Monica	4		1	1			1	1	9		5	8					1.0
9 Biz	5	3	4	20	-.049	3	6	4	19	3	31	14					9.0
11 Ali	5			6		2				1	25	18					
12 Kelsey	5	5	3	12	.167					2	3			2			6.0
14 Hillary	5	8	4	24	.167	1	2	4	16		3	4		3		3	11.5
MVHS21	5	50	23	164	.165	46	12	20	109	7	82	78	3	7		5	68.5

Attacks by Set	K	E	TA	Pct.
Set 1	6	4	33	.060
2	13	7	38	.157
3	14	2	29	.413
4	8	8	39	.000
5	9	2	25	.280

Set Scores:	1	2	3	4	5
MVHS21	23	25	25	19	17
Paly	25	23	18	25	15

Total Team Blocks: 10

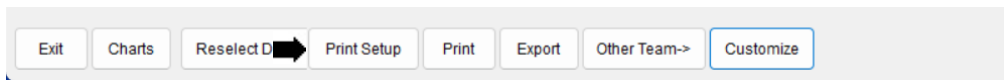
Exit Charts Reselect Data Print Setup Print Export Other Team-> Customize

Click on the **Print** button to send the current stat report to a printer.

Use the **Print Setup** button to override printer settings.

# Strategic Analyzer

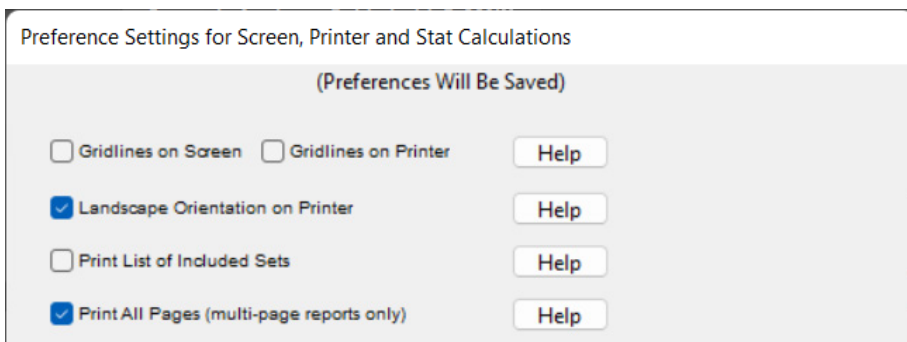
To customize the print options tap on the “Print Setup” button.



## Print Preference Options

There are several options in the Strategic Analyzer which affect how and what information is printed.

Tap on the “More Format, Print, Stat Options” button toward the middle of the top of the stats page to access these options. (Note: only print related options are shown here.)



Note that the option to show gridlines differently on the screen and the printer is only available on the Preferences screen. If you check or uncheck Gridlines at the top of the stat screen it will set both options.

If you check “Print List of Included Sets”, printed output will show all sets which have been selected.

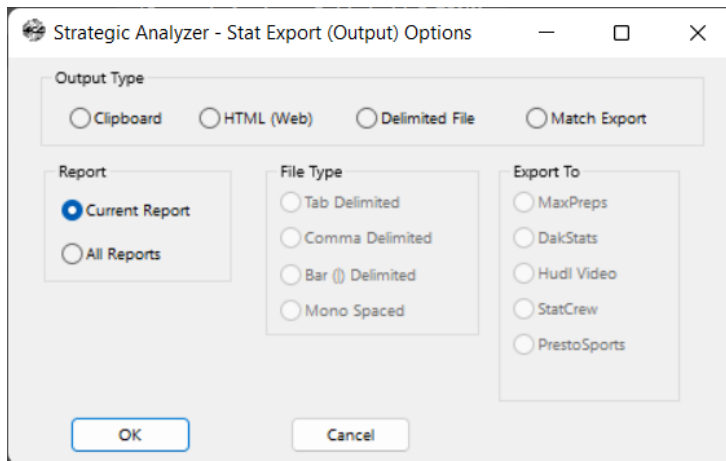
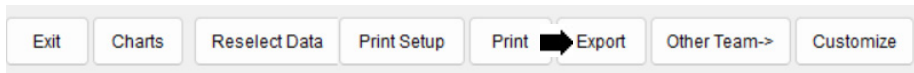
“Print All Pages” will print all pages of multi-page reports. Unchecking this option will cause only the current report on screen to be printed.

# Chapter 7

## Stat Export Features

Volleyball Ace stats can be exported to other systems for league reporting and consolidation. This is done using the Export features of the Strategic Analyzer. Stat export is currently implemented for use with MaxPreps and DakStats 3000.

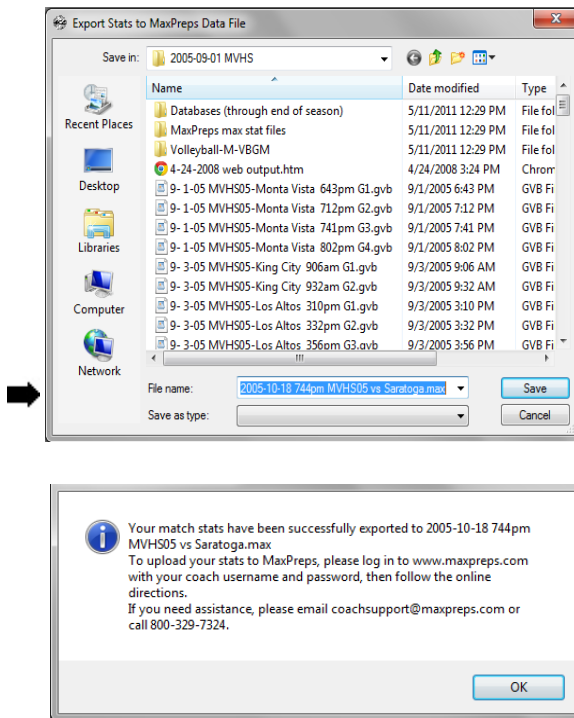
To export data, click on the **Output button** on the stats reporting screen, then select the target for the export:



# Strategic Analyzer

## Exporting Stats to MaxPreps

Click on the **MaxPreps export option**, then click on the **OK button**. Choose the name and directory where the MaxPreps .max file is to be written, and it will be output:



Note that match data can also be exported to a .max file right on the iPad/iPhone or Android device. The output file can then be emailed as an attachment. Note that once the .max file has been created, you need to go to [www.maxpreps.com](http://www.maxpreps.com), log on to your account and upload data.

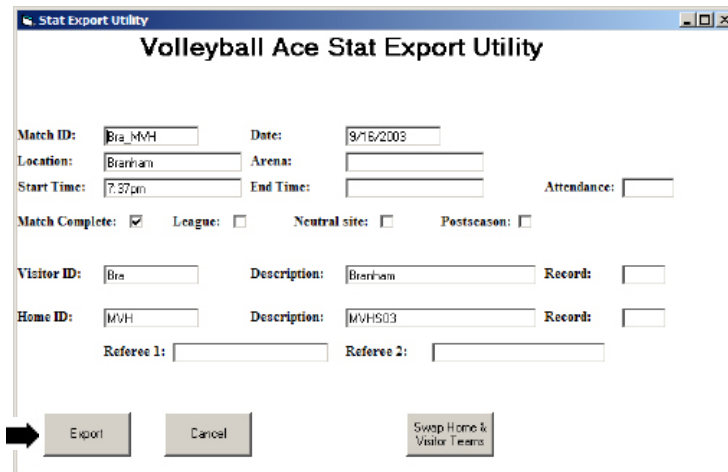
**IMPORTANT:** Due to an error in the MaxPreps data loading software, the .max file is now created as "import.txt".

## Exporting Stats to DakStats 3000

Click on the **DakStats export option**, then click on the **OK button**.

Note that you must export data one match at a time (and select all of the sets in each match) for the process to work correctly.

The Volleyball Ace Desktop Analyzer will scan the currently selected sets of the match and display a dialog to be completed with additional match information. Complete any blank fields which are to be included in the exported match data, then click on the **Export button**.



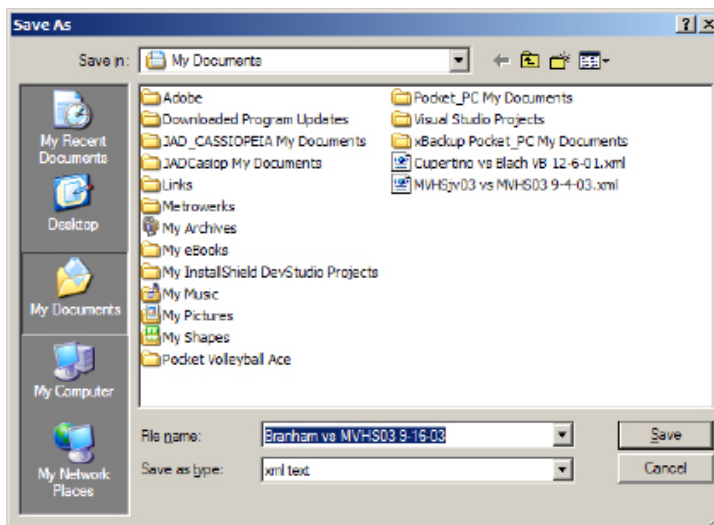
The screenshot shows a Windows-style dialog box titled "Stat Export Utility" with a subtitle "Volleyball Ace Stat Export Utility". The dialog contains several input fields and checkboxes for match information. At the bottom, there are three buttons: "Export" (with a right-pointing arrow icon to its left), "Cancel", and "Swap Home & Visitor Teams".

Field	Value
Match ID:	Bra_MVH
Date:	9/15/2003
Location:	Branham
Arena:	
Start Time:	7:37pm
End Time:	
Attendance:	
Match Complete:	<input checked="" type="checkbox"/>
League:	<input type="checkbox"/>
Neutral site:	<input type="checkbox"/>
Postseason:	<input type="checkbox"/>
Visitor ID:	Bra
Description:	Branham
Record:	
Home ID:	MVH
Description:	MVH503
Record:	
Referee 1:	
Referee 2:	

# Strategic Analyzer

Note: It is a good idea to make a note of the folder where the export file is being written so it is easy to locate in the DakStats import step.

Confirm the name of the export file then click on the **Save button**.

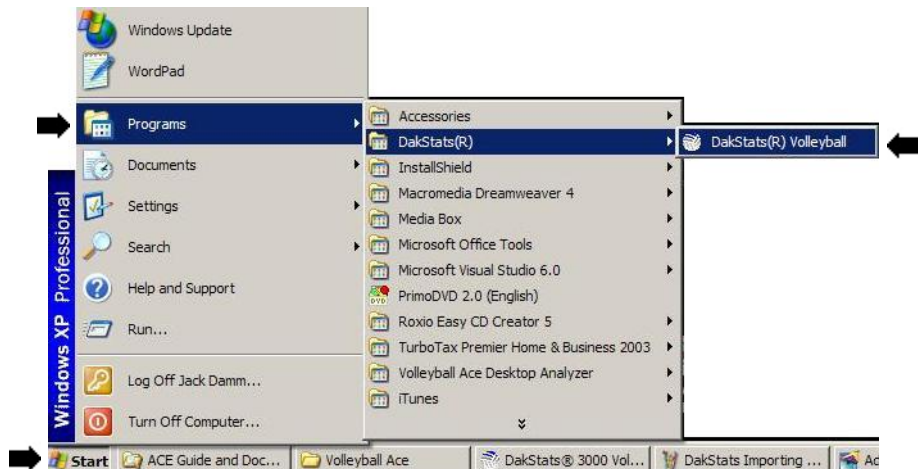


Click on the **Ok button**.

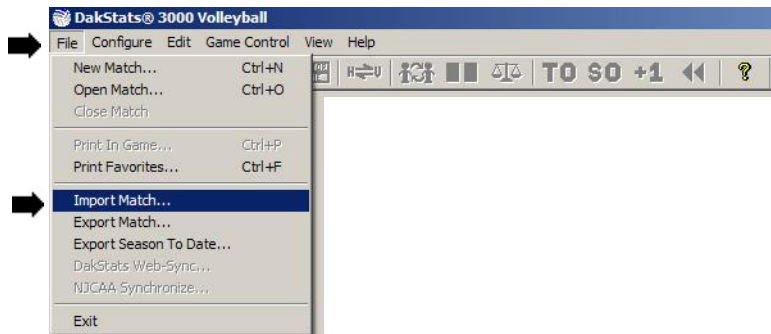
This is all you need to do to create the stat output file from the Analyzer. You can exit the Volleyball Ace Analyzer unless you want to export more data or review other stats.

When the match stats have been exported from Volleyball Ace, they can be loaded into DakStats 3000 using the **Import Match** option on the **File menu**.

Run DakStats 3000:

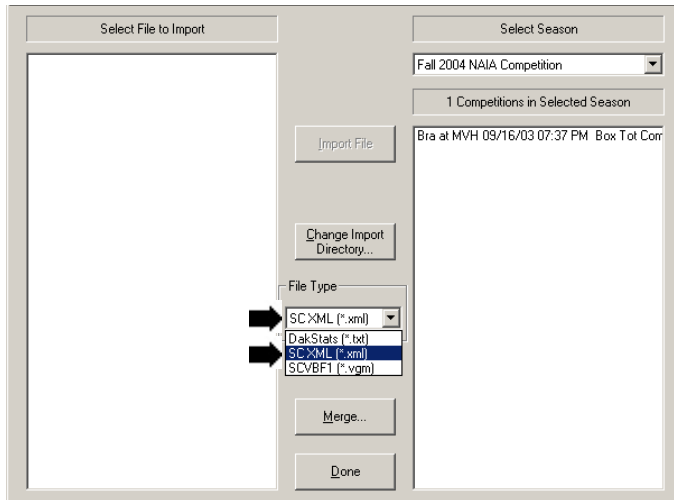


Select “Import Match” from the **File menu**:

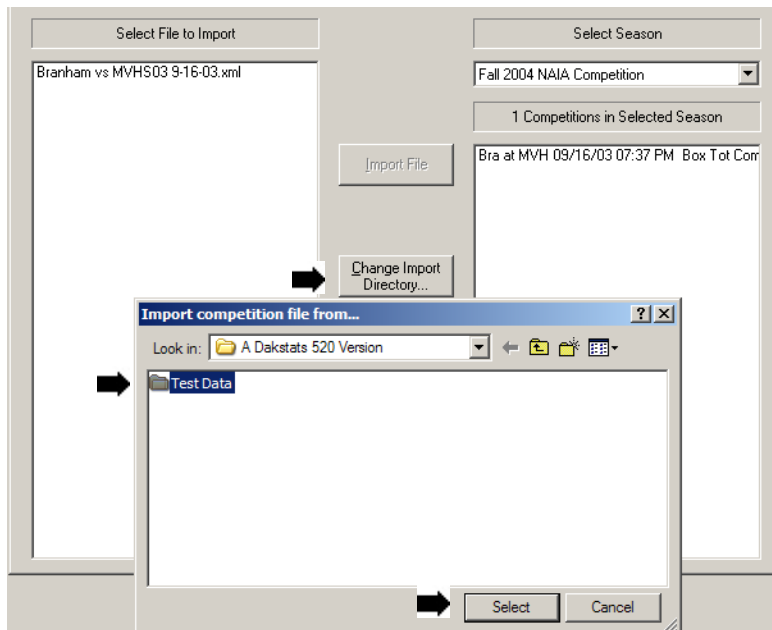


Set the File Type to import from “SC XML (\*.xml)” type files:

# Strategic Analyzer

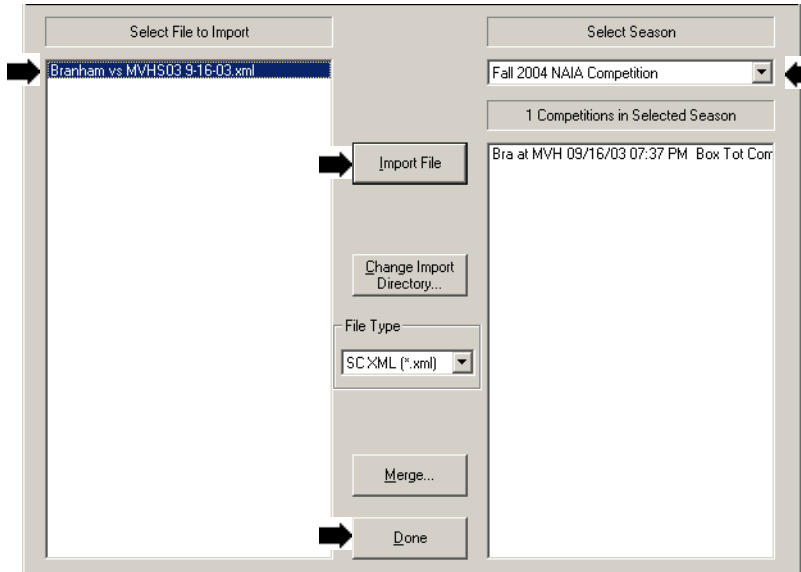


Click on the “Change Import Directory” button and select the directory (folder) where the Volleyball Ace match data was written:



Verify that you are importing data into the proper season. Use the drop-down list to select the correct season if necessary.

Select the match data file and click on the “Import File” button.



Click on the **Done** button when the import has completed. Your Volleyball Ace stats are now in DakStats and can be used to update conference data.

## Chapter 8 Preferences

The Strategic Analyzer has many options for how you select, calculate, display, export and print volleyball stats.

Some preferences (such as label width) are available at the top of the stat display screen. Others can be accessed via the “More Format, Print, Stat Options” button.

MVHS05 vs Saratoga ( 3 sets)

Report Type: Box Score Rows: Players Pages: <none> ☒ Suppress Zeroes ☒ Hide If No Stats ☒ Print Landscape Label Width: 25 First Last name ☐ Gridlines Sort Order: Jersey Number ☒ Up ☐ Down

[More Format, Print, Stat Options](#)

	Sets	Attk Kills	Attk Err	Attk TA	Attack Pct.	Set Asst	Srve Ace	Srve Err	Serve Rec Att	Rec Err	Def Att	Blk Dig	Blk SoloAssts	Blk Err	Gen BHE	Pts
1 Abby	3	1		6	.167	27	1	1	11	2	13				6	2.0
2 Summer	3	11	2	19	.474					1	1	2	2			13.0
3 Chelsea	3	9	8	31	.032	1	2		23	14	22	1				12.0
4 Jessica	1		1	1					1	3	1					
5 Laura	1						1		4							1.0
6 Christie	1		3	6	-.499						2				1	
7 Monica	2			2				2	13	2	5					
8 Lauren	1	2	1	8	.125		1		2	1	2					3.0
9 Biz	3	3		13	.231			1	4	2	3	3				3.0
10 Elizabeth	3								10			1				
11 Ali	3		1	3	-.332	1				1	18	14				
12 Kelsey	2	1		7	.143						2					1.0
14 Hillary	3	4	3	13	.077			3	4		4	1				5.0
MVHS05	3	31	19	109	.110	29	5	7	72	4	44	71	4		7	40.0

Attacks by Set	K	E	TA	Pct.
Set 1	10	4	45	.133
2	10	2	24	.333
3	11	13	40	-.050

Total Team Blocks: 4

Set Scores:	1	2	3	4	5
MVHS05	25	25	25		
Saratoga	12	17	23		

Exit Charts Reselect Data Print Setup Print Export Other Team-> Customize

The preference options button activates the Preference Settings screen.

Preference Settings for Screen, Printer and Stat Calculations

(Preferences Will Be Saved)

<input checked="" type="checkbox"/> Select by Matches not Sets	<a href="#">Help</a>
Label Width Screen: 25 <input type="button" value="v"/> Printer: 25 <input type="button" value="v"/>	<a href="#">Help</a>
Player Name Format: First Last name <input type="button" value="v"/>	<a href="#">Help</a>
<input checked="" type="checkbox"/> Stat Service Passes Only	<a href="#">Help</a>
<input checked="" type="checkbox"/> Hide If No Stats	<a href="#">Help</a>
<input checked="" type="checkbox"/> Suppress Zeroes (Show as Blank)	<a href="#">Help</a>
<input checked="" type="checkbox"/> Show Percent (%) Symbols	<a href="#">Help</a>
<input type="checkbox"/> Gridlines on Screen <input type="checkbox"/> Gridlines on Printer	<a href="#">Help</a>
<input checked="" type="checkbox"/> Landscape Orientation on Printer	<a href="#">Help</a>
<input type="checkbox"/> Print List of Included Sets	<a href="#">Help</a>
<input checked="" type="checkbox"/> Print All Pages (multi-page reports only)	<a href="#">Help</a>
<input type="checkbox"/> Pad Row Labels with Ellipses ... in Files (HTML)	<a href="#">Help</a>
<input type="checkbox"/> Show Verbose Text On Play-by-Play Rally Log	<a href="#">Help</a>
Points per Rotation Adjustment to Rotations	
<input type="button" value="Rotation adjusted for 1st serve"/>	<a href="#">Help</a>
<input type="checkbox"/> Include Sideout Points in Points per Rotation	<a href="#">Help</a>
<input type="button" value="Done"/>	<input type="button" value="Reset to Defaults"/>

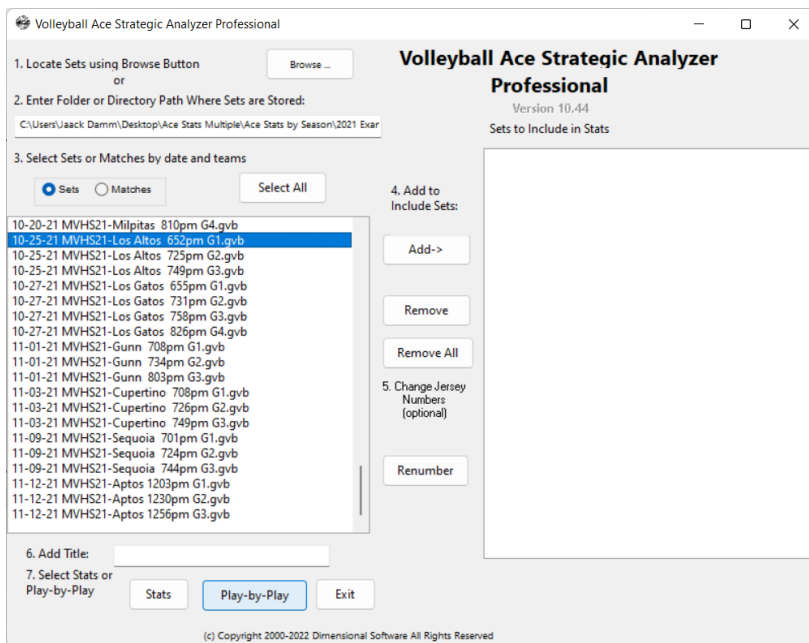
Preferences are remembered by the Strategic Analyzer so they become the default the next time the Strategic Analyzer is used.

## Chapter 9 Play-by-Play Log

The built-in reports (and custom reporting features) of the Strategic Analyzer cover most volleyball stat reporting needs. There may be occasions, however, where you want to see the details of specific rallies.

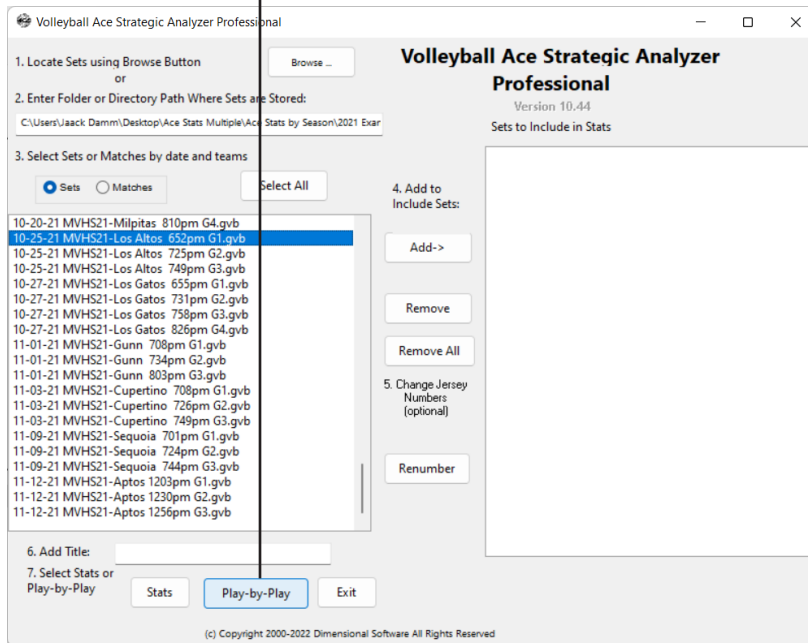
The Play-by-Play feature of the Strategic Analyzer can be used to show this level of detail. It shows each player touch and associated stat for each rally recorded in Volleyball Ace.

To see the Play-by-Play Log, select a single set on the Selection screen:



# Strategic Analyzer

Then tap on the **Play-by-Play** button on the selection screen:



The Stat Log can be viewed in either Terse or in Verbose form. The **Print** button prints the Stat Log.

# Strategic Analyzer

Play-by-Play Log List

Stat Log

10-25-21 6:52pm MVHS21 vs Los Altos Set 1

1: Sub 11/14  
2: 1-0 Svc 7Pass 1Set 3Atk Free 9Pass 1Asst 2Kill  
3: Rotate (1,3,2,7,9,14)  
4: Sub 12/7  
5: 2-0 1Serv Free 3Blk  
6: 3-0 1Serv RAtk 12&2BlkAtt RAtk 1Dig 12Asst 3Kill  
7: 3-1 1Serv Free 1Pass 12Set 2Atk RAtk 2Dig 14BHE  
8: Op Rotate  
9: Sub 11/14  
10: 4-1 SvcE  
11: Rotate (3,2,12,9,11,1)  
12: 4-2 3Serv RAtk 1Dig 12Set 3Free RAtk 3Dig 1Set 9Atk Free 3Pass 1Set 2Atk MAtk 11Dig 1Set 2Atk RAtk ...  
13: Op Rotate  
14: 5-2 Svc 3Pass 1Asst 12Kill  
15: Rotate (2,12,9,11,1,3)  
16: Sub 14/11  
17: Sub 10/2  
18: 6-2 10Serv RAtk 12Kill  
19: 7-2 10Serv LAtk 3Dig 1Set 12Atk RAtk 9Dig 1Set 3Atk BAtk 3Dig 1Asst 14Kill  
20: 7-3 10Serv RAtk 1Dig 14BHE  
21: Op Rotate  
22: Sub 11/10  
23: Sub 13/0  
24: 8-3 Svc 3Pass 1Asst 14Kill  
25: Rotate (12,9,14,1,3,11)  
26: Sub 7/12  
27: 8-4 7Serv RAtk 9DigE  
28: Op Rotate (0,0,0,0,0,13)  
29: 9-4 Svc 9Pass 1Set 14Atk Blk 14Pass LAtk 14Dig 9Asst 7Kill  
30: Rotate (9,14,1,3,11,7)  
31: 10-4 9Serv BAtk 9Dig 1Asst 3Kill  
32: 10-5 9ServE  
33: Op Rotate (0,0,0,0,13,0)

Style

☐ Terse ☒ Verbose

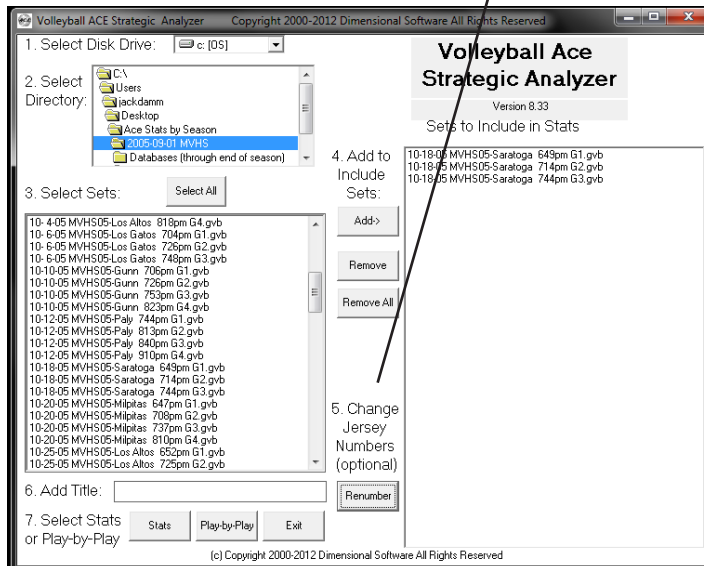
Done Print

## Chapter 10 Player Renumbering

### “Coach I Lost My Jersey ...”

There are several reasons why player stats may be collected with different numbers for the same player during the course of a season. In order to report those stats in a consistent fashion, it is important to be able to renumber the players in selected sets.

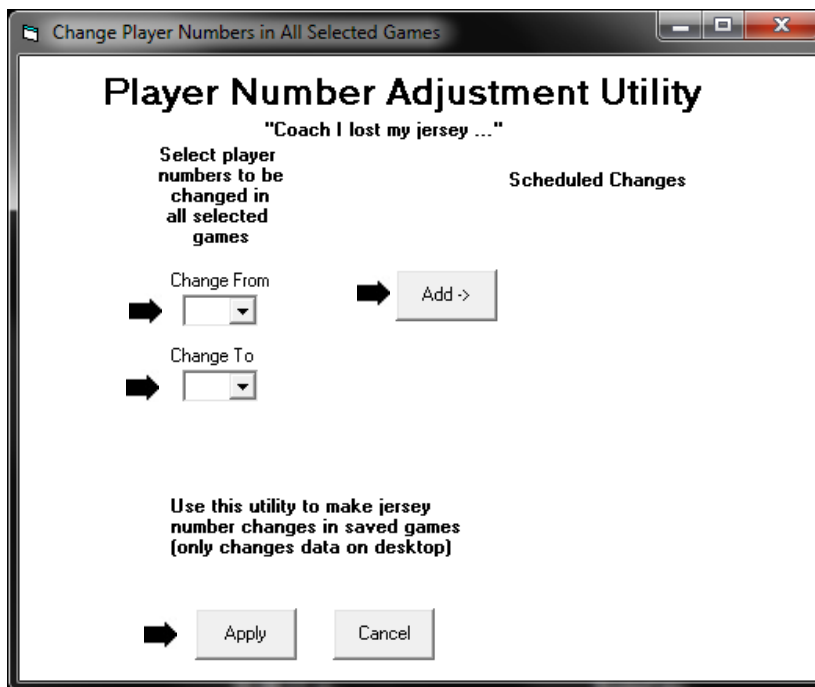
The Volleyball Ace Desktop Analyzer includes a utility function which can be used to renumber players. Run the Analyzer, select the sets which are to be modified, and tap on the **Renumber** button (5. Change Jersey Numbers-optional)



## Strategic Analyzer

On the Player Number Adjustment Utility screen, pick the **Change from** and **Change to numbers** from the drop-down lists and click on the **Add button**. Do this for all the numbers to be changed.

When the list of scheduled changes is complete, tap on the **Apply button** to have the changes made.



Note: Changes are made only to sets on the desktop, not on the handheld. Also note that the original set file is saved in the same directory on the desktop with a .bak extension.

Change Player Numbers in All Selected Sets

## Player Number Adjustment Utility

Select player numbers to be changed in all selected sets

Scheduled Changes

Change 9 to 24 Remove

Change From  
22 ▼

Change To  
11 ▼

Add ->

Use this utility to make jersey number changes in saved sets (only changes data on desktop)

Apply Cancel

# Chapter 11

## Desktop Data Transfer

Volleyball stats which have been recorded using Volleyball Ace on Apple and Android devices can be uploaded to a desktop PC or Macintosh for use with the Strategic Analyzer. No transfer is necessary if you are using Volleyball Ace for Windows on a desktop PC, because the Strategic Analyzer is built into that version.

For Apple devices use “iTunes File Sharing” in iTunes. Use the Finder on newer Macintoshes if iTunes file transfer is not available. For Android devices use a USB cable and the File Explorer (PC) or Finder (Mac) application. Once copied to the desktop, Volleyball Ace stats can be consolidated and analyzed with the Volleyball Ace Strategic Analyzer and other desktop tools.

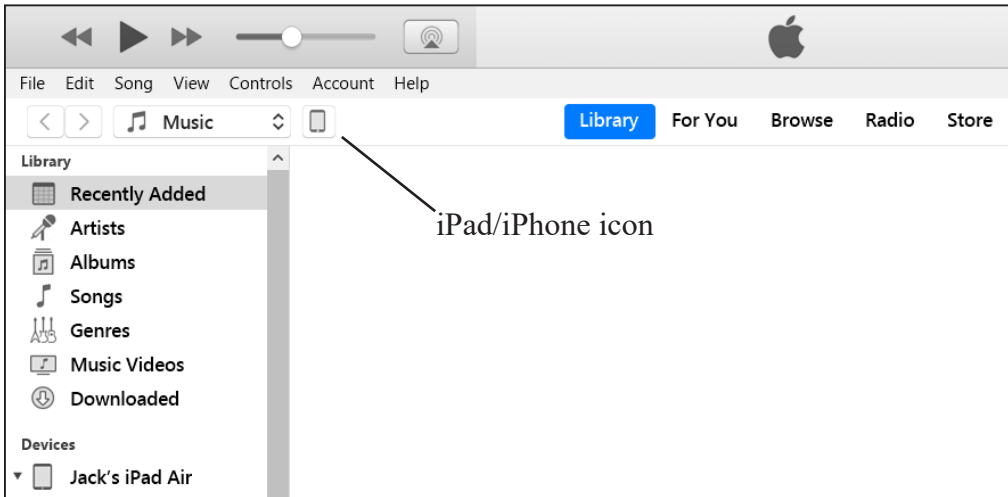
Volleyball Ace set stat data can also be sent to desktop PCs and Macintoshes from Apple and Android devices using the “Data” option on the menu from the **Email Stats screen** in Volleyball Ace.

### Transferring iPad/iPhone Apple Data with iTunes

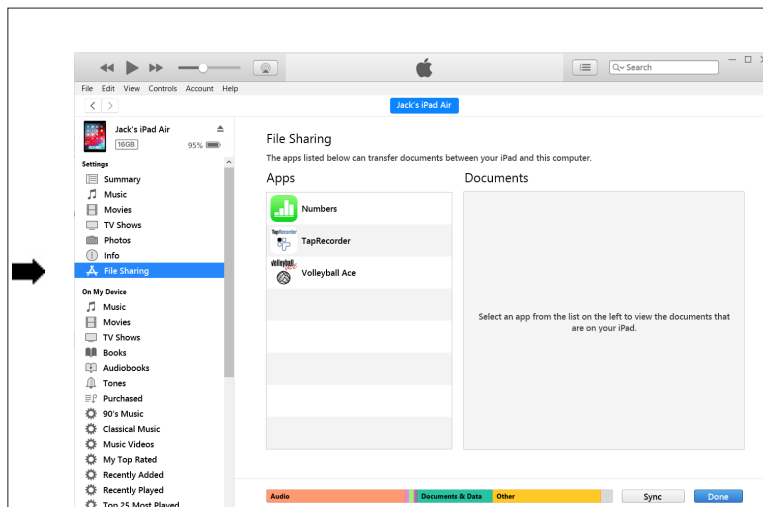
Set stats recorded with Volleyball Ace on Apple devices can be copied to a desktop PC or Macintosh using Apple’s iTunes desktop application if it is available. (iTunes is not available on newer Macintosh systems.)

Connect the iPad or iPhone to the desktop with the Apple-supplied USB cable. On PCs if iTunes does not start automatically then run it manually. (For PCs, iTunes is free for download on the web from Apple.)

When iTunes starts, click on the iPad/iPhone icon. It is the small rectangle at the upper left of the screen.

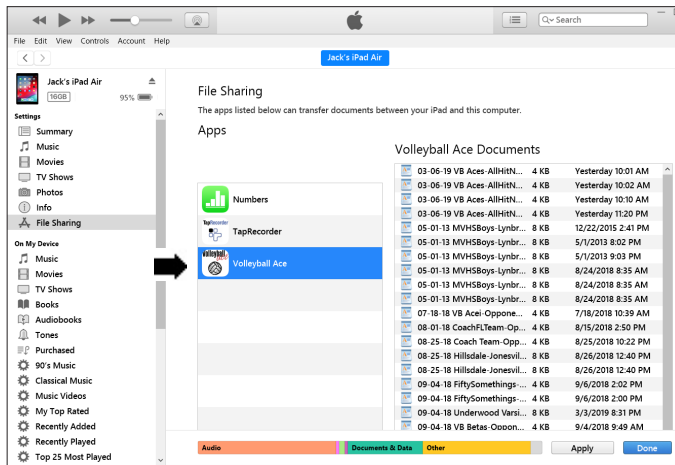


Then click on the File Sharing entry at the left. This will display all of the apps which are installed on this iPad and can share data.

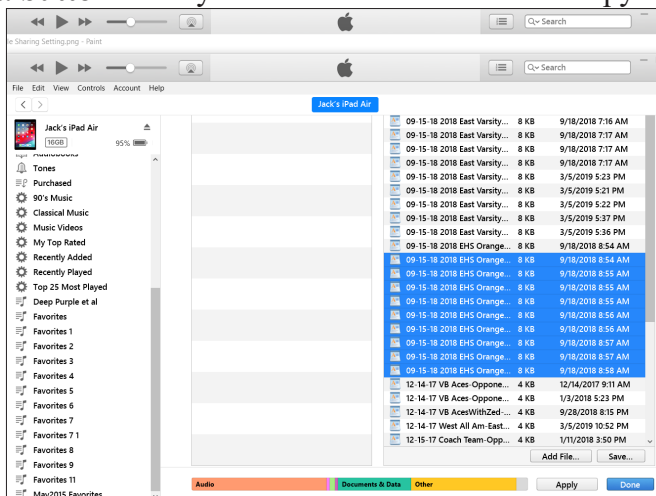


# Strategic Analyzer

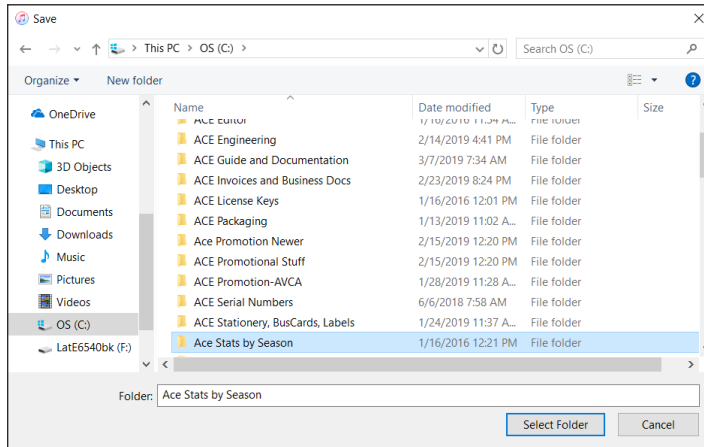
In the middle panel which lists iTunes File Sharing apps, find and select Volleyball Ace.



Scroll down on the right panel to find the Volleyball Ace set stat files you want. Click on the files to be copied to the desktop then scroll down so the **Add File** and **Save To** buttons are visible. (Note: you can select multiple files using click/shift-click and control click.) Click on the **Save To ...** button when you have selected the files to copy.



Select the folder where you want to store the files on the desktop computer. Once the folder is selected, the files will be moved.



Once the files are transferred you can click on the eject icon on the iTunes display and disconnect your iPad/iPhone. Note that there are multiple scroll bars controlling the middle section, the right section and the overall screen. They can be confusing, but with practice you will get used to them. It is less confusing on Macintosh versions of iTunes.

It is a good idea to put stat files into a folder on a local hard drive or on a network. Note that this is a copy of the stat files - they will remain on the iPad or iPhone until they are deleted. It is a good idea to name the folder with both the team name and the year or season.

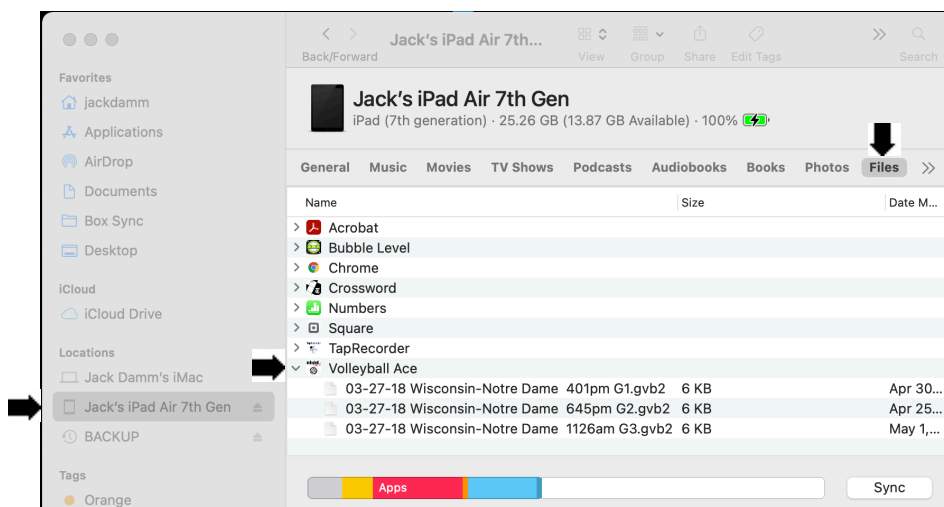
Note that you can also use iTunes to move files from one iPad to another via the desktop computer.

These illustrations are from the PC version of iTunes version 12.9. The Macintosh version is very similar. Your iTunes may vary in appearance if it is an earlier or later version.

## Transferring Apple Data without iTunes (Macintosh)

Newer versions of Mac O/S have eliminated iTunes as a way to transfer files from the iPad/iPhone to and from the Macintosh. Instead you must use the Mac Finder to drag-and-drop files to and from your Mac.

Plug the USB cable into the iPad/iPhone and a USB port on your Mac. Then run the Finder, tap on the iPad/iPhone device on the left of the screen and tap on the Files option (above the iPad/iPhone display). Then tap on the disclosure symbol next to Volleyball Ace to display the files which are on the iPad/iPhone.



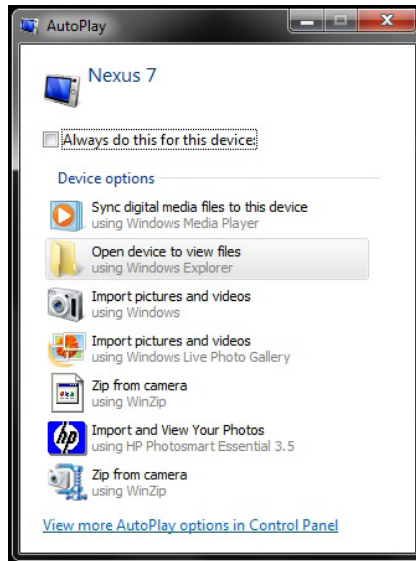
Now open a second Finder window and navigate to the folder on the Mac where you want to move the Volleyball Ace set stat files. Resize the two Finder windows so you can see both at the same time.

Then drag and drop the set stat (.gvb and .gvb2) files from the iPad/iPhone window to the second (Mac) window to move them. Files can also be transferred from the Mac to the iPad/iPhone the same way.

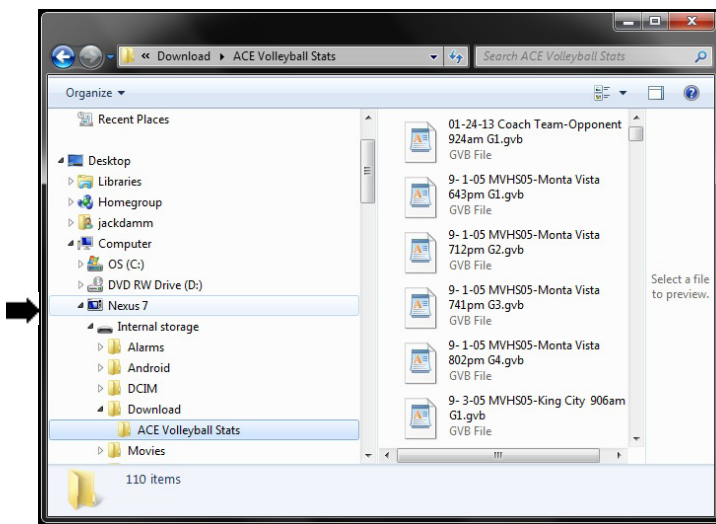
## Transferring Android Data to Windows PCs

Android devices do not need an application such as iTunes to copy data to desktop PCs. A “driver” should be loaded automatically the first time the Android device is connected to a desktop PC with the USB cable.

To begin, plug the USB cable into the Android device and a USB port on the desktop computer. Windows should recognize the device and let you run Windows Explorer. If it does not, then run the Windows Explorer from the Windows Accessories entry on the Start menu.



# Strategic Analyzer



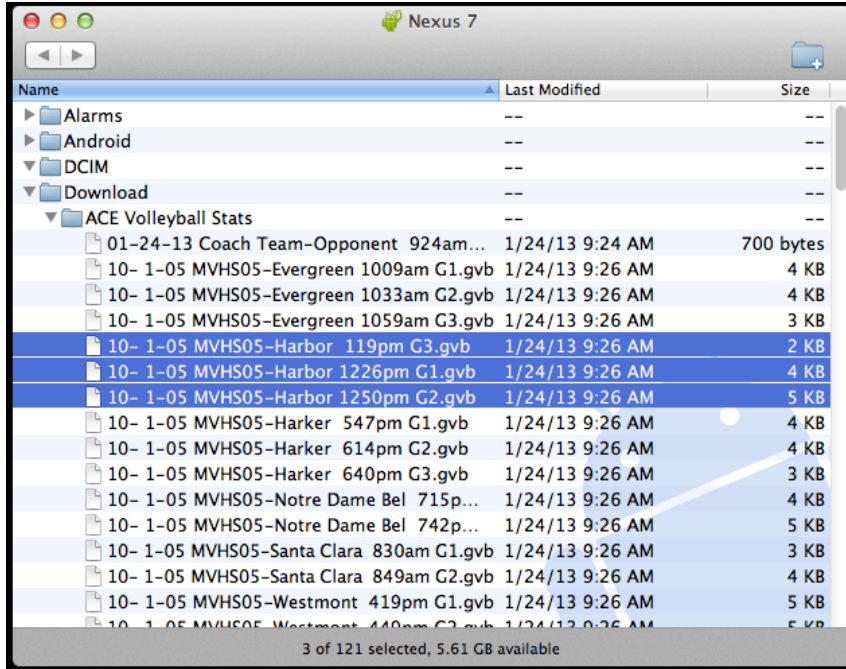
Click on the down arrows next to the device name, then the “Internal storage” folder and then the “Download” folder. Then click on the “ACE Volleyball Stats” folder. All of the Volleyball Ace set stat files should be visible. Now drag and drop the stat files to a folder on the desktop computer. (It is a good idea to set up a unique folder on your desktop to store Volleyball Ace set stat files.)

## Transferring Android Data to Macintosh Computers

Android devices need a special application to transfer data to the Mac. There is at least one application, “Android File Transfer”, that can be downloaded free of charge from the web at “[www.android.com/filetransfer/](http://www.android.com/filetransfer/)” and is easy to install.

Once downloaded and installed, the file transfer application should run automatically each time an Android device is connected to the Mac.

Connect the USB cable from the Android device to a USB port on the Mac. The Android File Transfer application will display a list of the folders on the Android device:



Click on the arrows to the left of the “Download” folder and the “ACE Volleyball Stats” folder. This should display the Volleyball Ace set stat (“.gvb”) files. Drag and drop the stat files to any folder on your Macintosh where you want to save them.

# Index

Under  
Construction

**DIMENSIONAL**  
S O F T W A R E

home  
court  
of the

**Volleyball**  
*we*

and  
the

 **TapRecorder**  
with PracticeStats